



Ripples

CITRUS HEIGHTS-AMERICAN RIVER BRANCH

June 2019, Volume 59, No. 10

End of Year luncheon at Plates Café

Our speaker, Erin Saberi, discussed the new Women's Commission for Sacramento County and how CHAR can be a part of this endeavor.



CHAR members received commendation for exemplary service to the branch. From left to right: Shirley Chang, Charmen Goehring, Mary Toutonghi, and PJ Missman. Lee Battershell, CHAR President, presented the awards.

CHAR Membership Survey (on page 6)

This is your opportunity to let the board know what types of meetings you prefer, what endeavors you support, and how the branch should pay for those endeavors.

Please let your voice be heard. The Board will be meeting in July to decide how to move forward. If the survey does not cover all your concerns, please feel free to add anything you want the board to know. (Add extra sheet)

Refer back to the April, May and this current Ripples for articles about various endeavors the Branch is currently funding or proposing to fund.

Please return survey to Esther Leal **By June 15th**, along with your membership renewal, if you prefer.

(If you would like the survey in Word format—to fill out and return by email, please contact Esther Leal.)



Save the Date: September Membership Brunch—Saturday, September 14, 2019

North Ridge Country Club, 7600 Madison Ave., Fair Oaks

MESSAGE FROM OUR PRESIDENT



The U.S. House Joint Resolution (Res 38) to remove the deadline for the ratification of the Equal Rights Amendment is before the 116th Congress. Let's pray Congress passes Res 38 and the 38th state passes the ERA.

CHAR 2018/2019 year was phenomenal. California awarded our Days For Girls Program, and praised our October Ballot Forum. We celebrated 20-years in Tech Trek and created a Tech Trek Alumni Association. We started the first AAUW@ARC student club and are working to establish a Commission for Women and Girls on the Sacramento County Board of Supervisors.

We sent five eighth graders to Tech Trek camp, and we awarded seven ARC scholarships to women who are head of household. CHAR people, YOU ARE WONDERFUL!!

Will our achievements cost us more money? Yes, they will, but, surprisingly not as much as one might think. Roberta Schmalz will publish the complete budget in September for your approval.

Vern Chang said all money should not come from our members. With the right plan we can do more. We may need to increase Branch dues in year 2020/2021, but other funding should come from grants, fund raisers, and corporate donations. Vern will help us form a plan.

The survey on page 6 is your opportunity to help devise this plan! Please help the Board by filling out the survey and returning it by June 15th. The Board Retreat is on July 1st and the results must be tabulated and ready for the Board to consider.

Many thanks to all for a wonderful year and a bright new year!!!

EQUAL MEANS EQUAL

A Lee Battershell-Baird
CHAR President

OFFICERS 2018-2019

PRESIDENT
Lee Battershell-Baird

PROGRAM VP
PJ Missman

CO-V.P. MEMBERSHIP
Finance—Karen Campbell
Hospitality—Darlene Houston

V.P. AAUW FUNDS
Elaine Bemis
Shirley Chang

SECRETARY
Mary Toutonghi

TREASURER
Roberta Schmalz

DEADLINE FOR SEPT. RIPPLES

August 10th

Esther Leal:
emleal@comcast.net



CHOICES! CHOICES!

3rd Thursday Book Group

Date: Thurs., June 20, 2019

Time 1:00 PM

Place: Lemon Grass Restaurant,
601 Munroe Street

RSVP: by Tuesday, June 18th to Fran
Clarke

Book: *Varina* by Charles Frazier

Discussion Leader: Corrine Laing

More Than Books

Date: June 19, 2019

Hostess: Linda

Topic: Kurt Vonnegut

Date: July 17, 2019

Hostess: Judy

Topic: Summer Reading

Date: August 21, 2019

Hostess: Charlene

Topic: Summer Reading

Hungry Ladies Eating Out

Will not meet in June or July.
Contact Corrine Laing for time and place in
August when the dinners will resume.

Whodunits

Date: Tues., June 11th

Time: 1:00—2:30 PM

Place: to be determined
New members welcome. We
meet all summer—same
schedule.

Call Coby Bonner for summer location.



Days for Girls

Date: Wed., June 12, 2019

Time: 1:30 PM

Place: Shirley Chang

RSVP: Shirley

Will continue to meet all summer.

Bird Watching

will resume in October.



World Country

Will not meet in June.
Next meeting in September. Check
the Sept. Ripples for information and
country selected.

Mah Jong

Date: Thurs. June 13, 2019

Time: 1:30 PM

Place & RSVP: Shirley Chang

Will continue to meet this summer.

AAUW fundraiser—\$5.00

Gadabouts

No Gadabout in June. More info
forthcoming in Sept. Ripples.

Enjoy your summer!

California Water Issues

No summer meetings

More Budget Considerations

For the past several months, the various programs and endeavors that CHAR has worked to develop have been presented to CHAR members for their evaluation of the importance to the branch and willingness to fund these various projects. In April you heard from our Treasurer, Roberta Schmalz outlining the costs and sources for funds. In May you heard from Mary Duval about Tech Trek. Charlene Eberwine discussed the ARC Student Club and Karen Wilkes explained Days for Girls. Below are three more presentations: Charlene Eberwine reports on the ARC Student Club and their achievements to date. Charmen Goehring presents information on the Commission for Women in Sacramento County. Lee Battershell explains The Caring Committee being considered for inclusion in CHAR endeavors.

Please fill out your survey on page 6 and return it by June 15th. Your input is what will determine the future projects of this branch. Let your voice be heard!

AAUW @ARC Student Club signed up eleven potential new members on Club Day. Club President Samantha Brady will be attending the National Conference for College Women Students Leaders at University Of Maryland, College Park. On April 28, AAUW Advisors and students from four colleges: ARC, CSUS, UC Davis and Sierra College met at Gloria Yost's home. Students and advisors shared ideas to help each other's club be successful. The meeting was full of enthusiasm and energy. Five of the students present will be attending the National Conference for College Women Students Leaders at U. Of Maryland, College Park. *Charlene Eberwine*

Commission on the Status of Women is falling under the CHAR umbrella for fiscal reasons and, as a branch, we support the mission and value of a commission in Sacramento County. The culminating event will be on or about August 26. This event will be open to the public, targeted and general; will include speakers (hoping for Congresswoman Doris Matsui to be one), and will be our presentation of the data that has been collected over the past year outlining the need for a Commission in Sacramento to the county supervisors. We have several branch members who have been intimately involved in the planning committee, representing our CHAR branch, over the past year.

Charmen Goehring

The Caring Committee will begin 2019/2020 asking members to complete a survey telling their names, benefits they want to receive and benefits they want to provide, such as taking meals to our members who are shut in or meals to members returning from a hospital stay. We can revive CHAR's award winning directory that describes available services within our communities. As we progress we can include classes and/or speakers and more.

Please send recommendations to *A Lee Battershell*,

Membership Renewal Form for 2019-2020

CHAR MEMBERSHIP RENEWAL

☐ Check here if any information is different from last year's directory.
Highlight changed information. Please complete the following information as you wish it to appear in the branch directory:
Please print.

Name _____

Address _____

Phone:

Home _____

Cell _____

(Include area code with all phone nos.)

E-mail address:

Ripples Newsletter, emailed ____yes

____Mailed through Post Office*

** \$10 covers annual printing and mailing costs of your Ripples. The branch is only able to provide this service upon receipt of the \$10.*

The due date for renewing your membership is June 15th.
Make check payable to CHAR/AAUW

Send Form and Payment to:

Esther Leal

Please send in the entire page when completing the membership renewal form

CHAR MEMBERSHIP FEES

Circle appropriate category:

Regular Dual Honorary

1) Regular Member Category **Breakdown of dues:**

AAUW National Dues \$59
(\$56 of this is tax deductible)

CA State Dues \$20

CHAR Dues (Branch) \$15

Regular Member—Total: \$94

Note: *If you are a Paid Life Member your total fee is \$35. (Total of State and CHAR fees. You do not pay National Fees.)*

Paid Life Member—Total \$35.

2) Dual Member Category

My Primary Branch is: _____

If you are a dual member, and CHAR is not your primary branch, **your total fee is \$15.** (Our CHAR branch fee). You do not pay the State and National fees twice! If this is your primary branch, total fees of \$94 apply.

3) Honorary Life Member Category

If you are an Honorary Life Member, you only pay \$15.

Honorary Life Member- Total: \$15 fee

Renew Online!

Look for the email from AAUW National. Follow the easy steps—no membership # or password required.



Look for contribution opportunities in the September 2019 Ripples and at the Membership Brunch on September 14th.

Please don't send any with this renewal, except adding \$10 if you're requesting the printed Ripples.

CHAR Member Survey

CHAR members are being asked to help the branch decide its direction for the upcoming year. Your input and suggestions are vital to how the branch moves forward. **Please answer the following questions by June 15th** and return to Esther Leal . (Include with membership renewal if you like.)

The following endeavors require funds to accomplish their goals. Please check up to four that are your highest priority in no particular order:

- ☐ ARC scholarships to returning female students who are head of household
- ☐ Annual Tech Trek Scholarships for UC Davis.
- ☐ Caring Committee (new)
- ☐ Commission on the Status of Women and Girls in Sacramento County (new)
- ☐ Days for Girls (new)
- ☐ Student Club at ARC (new)
- ☐ Support for international charities that support women
- ☐ Support for member conference attendance
- ☐ Tech Trek student reunions

The funding for the above endeavors must come from either dues, fundraising and/or using CHAR's reserves. Check up to four that you agree with most in no particular order.

- ☐ Increase dues by \$5. (With 100 members currently, funds increased by \$500.)
- ☐ Increase dues by \$10. (With 100 members currently, funds increased by \$1,000.)
- ☐ Generate funds by fundraising or voluntary member donations.
- ☐ Use a portion of CHAR's reserves (currently at about \$6,000).
- ☐ Reduce current expenses / projects so as not to require additional funding.
- ☐ Use a combination of sources to fund endeavors.

General questions concerning preferences:

Would you be more willing to attend monthly meetings if they did not include a luncheon/ food cost? ☐yes ☐no

Would you prefer that fundraisers were held on a monthly meeting basis or one or two meetings per year? ☐ monthly ☐ one or two per year (combine charity/projects)

Do you prefer that CHAR holds ☐monthly meetings or ☐quarterly meetings?

Any other comments/ concerns that you would like the Board to consider:

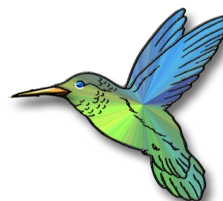
(Continue on another sheet if not enough space here.)

Welcome New Members!

Pamela "Pammy" Paulson



Denise Spolerich



Matthew Register (Faculty Advisor
to ARC Student Group)



Barbara "Jill" Faust



At our Tech Trek reunion on May 4. We welcomed young women from past Tech Trek camps and four of our new campers. The event included almost all of the CHAR members who have worked on Tech Trek over the years, including five co-ordinators, Jan Bessette, Elaine Bemis, Marilyn Burnam, Giulia Favro Farruggia and Mary Duval.

It was a lovely party, with spectacular array of cakes, including a Geode cake and a chocolate truffle cake with a toy microscope topper baked by Beverly Myers. Tables were decorated with old fashioned tea cups and saucers and roses arranged by Mary Toutonghi. **Dr. Judy Kjelstrom**, retired Microbiologist from UC Davis gave a motivational presentation. Susan Wheeler spoke about Tech Trek camp. Lee Battershell welcomed everyone. Marie Wolbach, founder of Tech Trek sent a congratulatory message. Many former Trekkers who could not attend expressed wonderful memories of their camping experience.

Thank you to all the committee members who helped make this possible: Jan Bessette, Elaine Bemis, Lee Battershell Baird, Pat Boyd, Charlene Eberwine, Merrie McLaughlin, Roberta Schmalz, Mary Toutonghi, Susan Wheeler. It took a lot of time and effort, but was a labor of love.
Mary Duval, Tech Trek Chair

Marathon Bridge Sign Ups

Both old and new teams are welcome. You and your partner will play a different team each month from September through April on a date agreed upon by the respective teams. Winners are announced at a Bridge luncheon in May.



Each player should mail a \$20.00 check, payable to CHAR/AAUW, to Pat Boyd. Your \$20 donation will be split 50/50 between Local Scholarships and Tech Trek. Please write the name of your partner on the memo line of your check.

Checks must be received by June 30, and your CHAR dues must be paid. Instructions and a play schedule will be mailed to each partner in late August.

Co-Chairs for the coming year are Pat Boyd, Margot Leidig and Sharon Swanson.

CHAR



Deadline for Sept. 2019
Ripples
August 10, 2019

Our CHAR website:
[www.citrusheights-
ca.aauw.net](http://www.citrusheights-ca.aauw.net)

Facebook:
[www.facebook.com/
aauwchar](http://www.facebook.com/aauwchar)

Wanted! – A Treasurer Elect

Do numbers fascinate but intimidate you? If so, please consider becoming the Treasurer Elect, an amazing volunteer opportunity. I have agreed to extend my term as treasurer for one more year through June 2020. I would be happy to mentor someone, during that time, including teaching them Quicken basics, with the goal of having a new Treasurer for the fiscal year 2020-2021.

Please contact Roberta Schmalz



June 2019



Sun	Mon	Tue	Wed	Thu	Fri	Sat
						1
2	3	4	5	6	7	8
9	10	11 Who Dunits	12 Days for Girls	13 Mah Jong	14	15
16	17	18	19 More Than Bks	20 3rd Thurs.Bks	21	22
23	24	25 Free Mah Jong	26	27	28	29
30						

AMERICAN ASSOCIATION OF UNIVERSITY WOMEN MISSION STATEMENT:

AAUW advances equity for women and girls through advocacy, education, philanthropy and research.